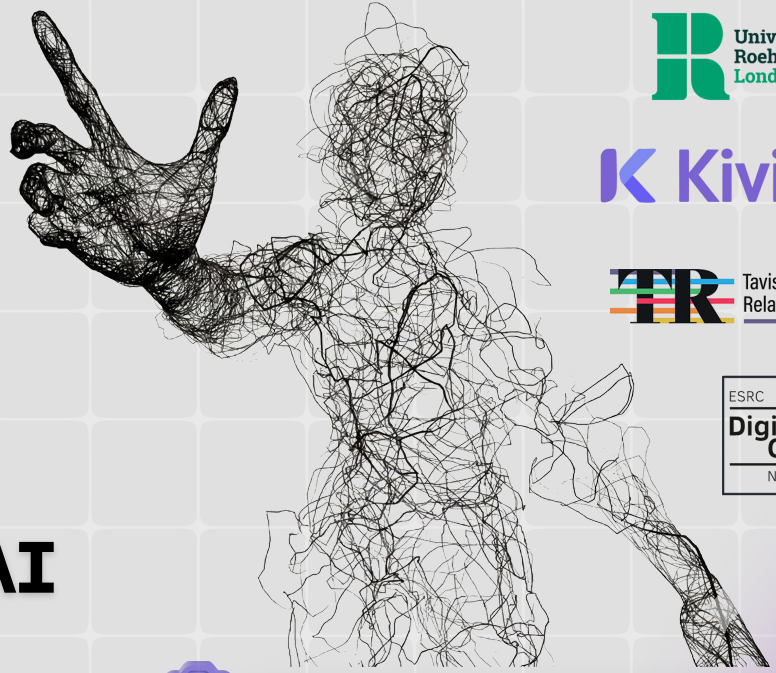


# K-BENCH LAUNCH EVENT



## Setting the standard for safer therapeutic AI

**Date:** Thursday 11 June 2026

**Time:** 4.00–5.00 pm, presentations  
5.00–7.00 pm, reception, networking,  
and showcase

**Location:** University of Roehampton,  
London  
Room details will be confirmed to  
registered attendees.



Join us for the launch of **K-Bench** — a new benchmark designed to evaluate the safety and therapeutic competence of AI systems used in mental health and emotional support contexts.

Developed through the **Digital Good Network** and **Kivira** in collaboration with clinicians, researchers, lived-experience contributors, and sector partners, K-Bench aims to support better standards, stronger evidence, and more informed regulation for therapeutic AI.

This launch event will bring together stakeholders from across **mental health, policy, regulation, academia, industry, and public service** to explore the future of safe and effective AI in therapeutic settings.



### WHAT YOU CAN EXPECT

- 01 Keynote perspectives on AI safety, regulation, and therapeutic innovation
- 02 The official introduction to K-Bench and its purpose
- 03 An overview and demonstration of the benchmark
- 04 Initial insights and results
- 05 A reception with networking and themed showcase booths

ATTENDANCE IS BY REGISTRATION /EXPRESSION OF INTEREST. A HYBRID OPTION WILL ALSO BE AVAILABLE FOR THOSE JOINING ONLINE.

[Registration Link](#)

